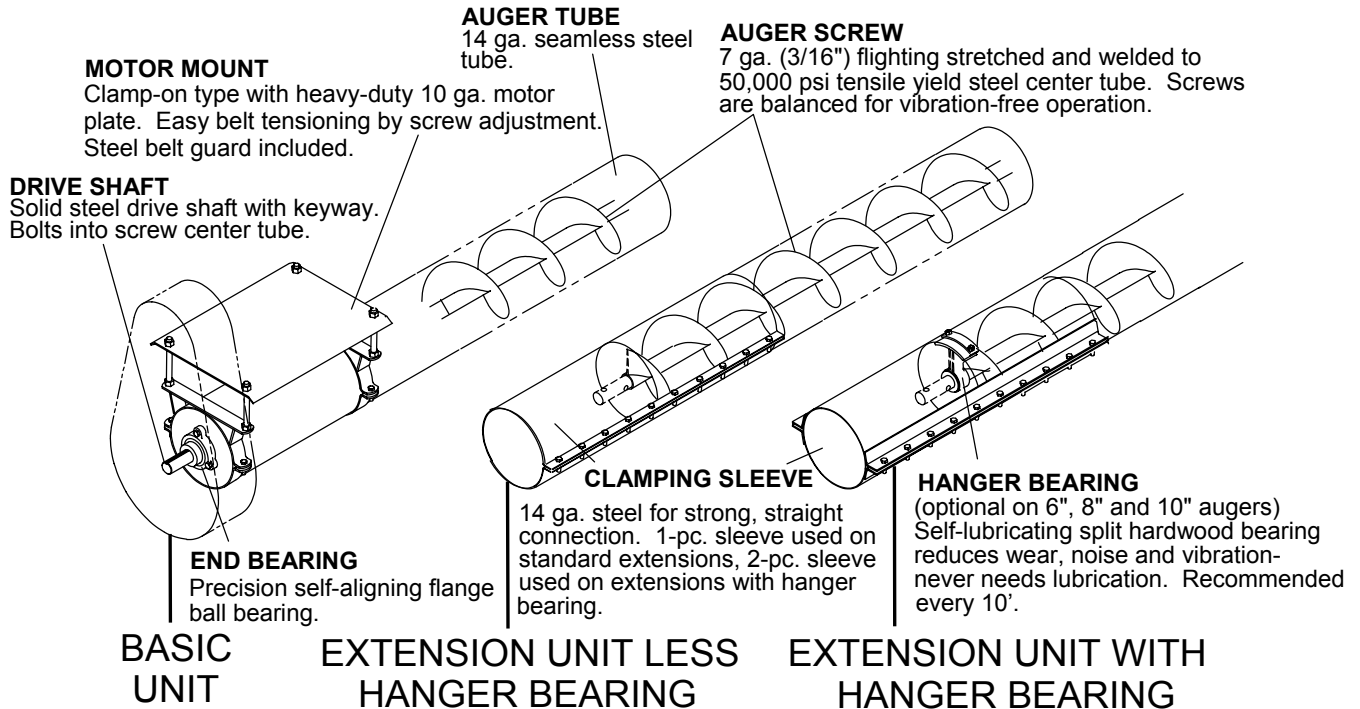


# POWER-FLITE

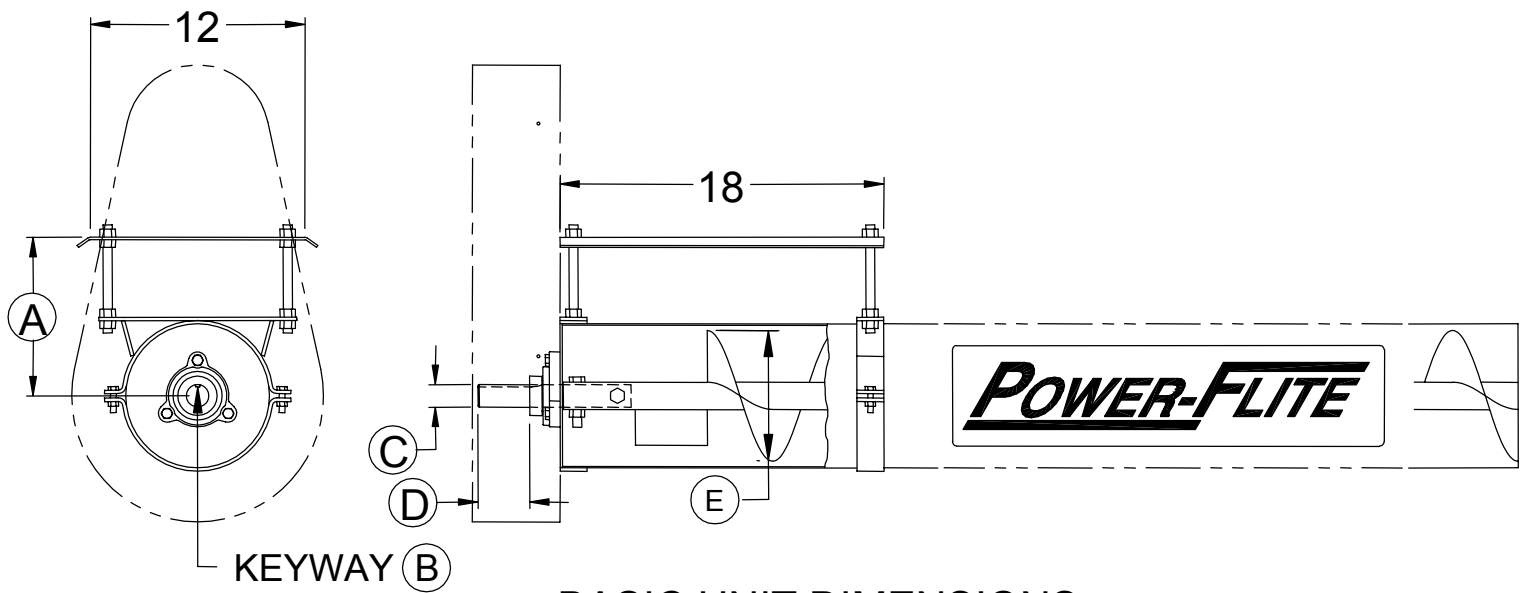
## TUBE-TYPE CUSTOM AUGER SYSTEMS

4" \* - 5" \* - 6" \* - 8" \* - 10" \*\*



**Notes:** \* Galvanized Tube. \*\* Painted Tube

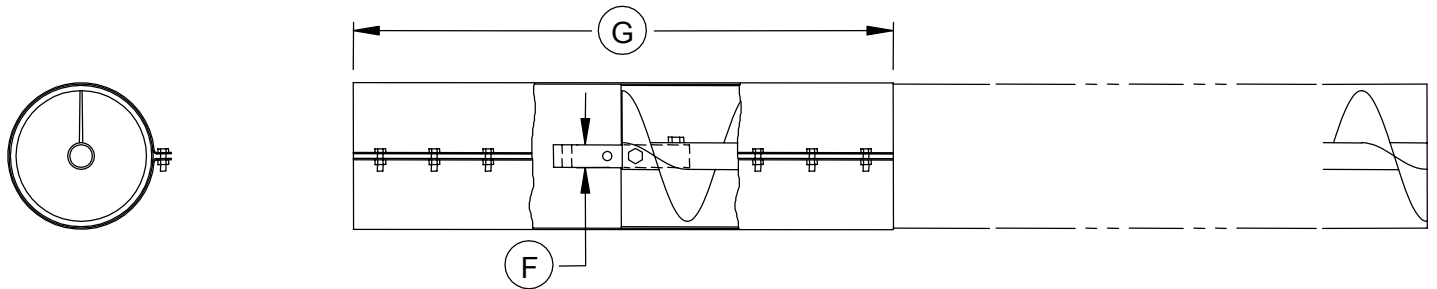
TUBE DIA	TUBE LENGTH	BASIC UNIT			EXTENSION UNIT LESS HANGER BEARING			EXTENSION UNIT W/ HANGER BEARING		
		CATALOG NO.	PRICE	WEIGHT (LBS)	CATALOG NO.	PRICE	WEIGHT (LBS)	CATALOG NO.	PRICE	WEIGHT (LBS)
4"	5'	---		---	---		---	---		---
	10'	4T - 1		73	4E - 1		61	---		---
	15'	4T - 2		101	4E - 2		90	---		---
	20'	4T - 3		129	4E - 3		117	---		---
	SPEC	4T - 4		---	4E - 4		---	---		---
5"	5'	---		---	---		---	---		---
	10'	5T - 1		89	5E - 1		78	---		---
	15'	5T - 2		124	5E - 2		113	---		---
	20'	5T - 3		160	5E - 3		149	---		---
	SPEC	5T - 4		---	5E - 4		---	---		---
6"	5'	---		---	6E - 0		61	6E - 5		70
	10'	6T - 1		103	6E - 1		101	6E - 6		110
	15'	6T - 2		143	6E - 2		141	---		---
	20'	6T - 3		183	6E - 3		181	---		---
	SPEC	6T - 4		---	6E - 4		---	6E - 7		---
8"	5'	---		---	8E - 0		82	8E - 5		84
	10'	8T - 1		132	8E - 1		135	8E - 6		139
	15'	8T - 2		186	8E - 2		189	---		---
	20'	8T - 3		241	8E - 3		244	---		---
	SPEC	8T - 4		---	8E - 4		---	8E - 7		---
10"	5'	---		---	10E - 0		96	10E - 5		109
	10'	10T - 1		159	10E - 1		166	10E - 6		178
	15'	10T - 2		228	10E - 2		235	---		---
	20'	10T - 3		260	10E - 3		303	---		---
	SPEC	10T - 4		---	10E - 4		---	10E - 7		---



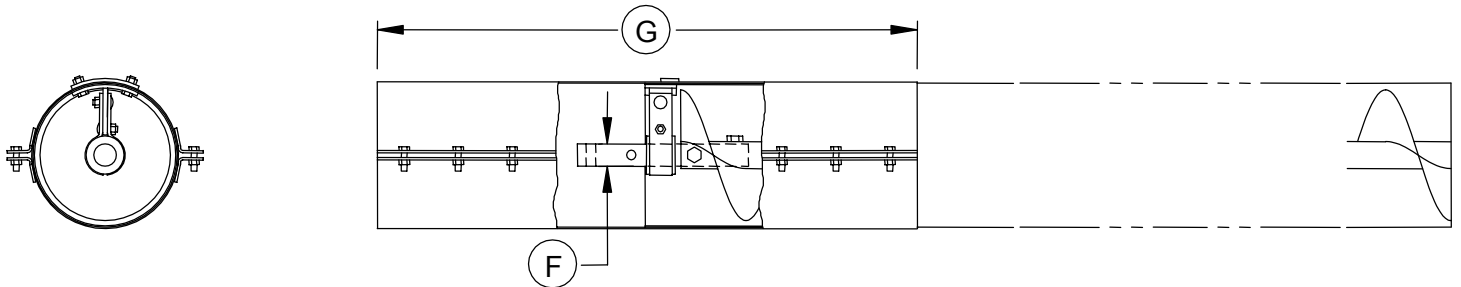
### BASIC UNIT DIMENSIONS:

TUBE DIA.	MOTOR MOUNT HEIGHT ADJ. (A)	DRIVE SHAFT KEYWAY (B)	DRIVE SHAFT DIA. (C)	DRIVE SHAFT LENGTH (D)	FLIGHTING DIA. (E)
4"	3.38"-7.31"	1/4"	1"	2-3/8"	3"
5"	3.88"-7.81"	1/4"	1"	2-3/8"	4"
6"	4.38"-8.31"	1/4"	1"	2-3/8"	5-1/4"
8"	5.38"-9.31"	1/4"	1-1/4"	2-7/8"	7-1/4"
10"	6.38"-10.31"	3/8"	1-1/2"	2-5/8"	9-1/4"

### EXTENSION LESS HANGER BEARING:



### EXTENSION WITH HANGER BEARING:



### EXTENSION UNIT DIMENSIONS:

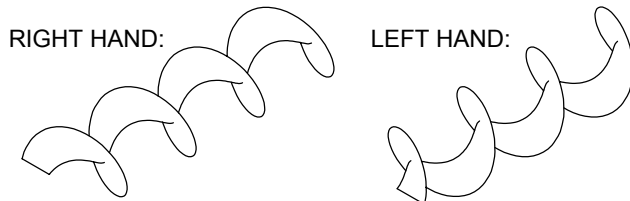
TUBE DIA.	CONNECTOR SHAFT DIA. (F)	SLEEVE LENGTH (G)
4"	3/4"	15"
5"	3/4"	16"
6"	1"	30"
8"	1-1/4"	30"
10"	1-1/2"	30"

## REPLACEMENT AUGER SCREWS

SCREW DIA.	NOMINAL LENGTH	BASIC SCREW W/ PADDLE			STD. EXTENSION SCREW			EXTENSION SCREW FOR HANGER BEARING		
		CATALOG NO.	PRICE	WEIGHT (LBS)	CATALOG NO.	PRICE	WEIGHT (LBS)	CATALOG NO.	PRICE	WEIGHT (LBS)
3"	5'	---		---	---		---	---		
	10'	4T1S		21	4E1S		21	---		
	15'	4T2S		32	4E2S		32	---		
	20'	4T3S		43	4E3S		43	---		
	SPEC.	4T4S		---	4E4S		---	---		
4"	5'	---		---	---		---	---		
	10'	5T1S		27	5E1S		27	---		
	15'	5T2S		41	5E2S		41	---		
	20'	5T3S		55	5E3S		55	---		
	SPEC.	5T4S		---	5E4S		---	---		
5-1/4"	5'	---		---	6E0S		16	6E5S		
	10'	6T1S		33	6E1S		33	6E6S		
	15'	6T2S		49	6E2S		49	---		
	20'	6T3S		65	6E3S		65	---		
	SPEC.	6T4S		---	6E4S		---	6E7S		
7-1/4"	5'	---		---	8E0S		22	8E5S		
	10'	8T1S		45	8E1S		45	8E6S		
	15'	8T2S		67	8E2S		67	---		
	20'	8T3S		89	8E3S		89	---		
	SPEC.	8T4S		---	8E4S		---	8E7S		
9-1/4"	5'	---		---	10E0S		34	10E5S		
	10'	10T1S		68	10E1S		68	10E6S		
	15'	10T2S		102	10E2S		102	---		
	20'	10T3S		136	10E3S		136	---		
	SPEC.	10T4S		---	10E4S		---	10E7S		

\*For special sections use price of next longer unit.

### INDUSTRIAL AUGER FLIGHTING (less center tube)

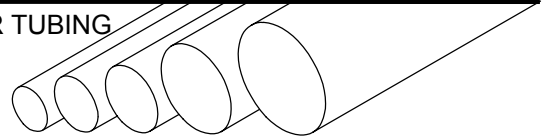


CAT. NO.	O.D.	I.D.	FLIGHT THICKNESS		WEIGHT PER FT.	PRICE PER 5'	PRICE PER 10'
428	3"	1"	7 GA.	RH	1.0		
528	4"	1"	7 GA.	RH	1.6		
628	5-1/4"	1-1/4"	7 GA.	RH	1.8		
629	5-1/4"	1"	10 GA.	LH	1.2		
729	6"	1-1/4"	10 GA.	RH	1.6		
828	7-1/4"	1-1/2"	7 GA.	RH	2.7		
829	7-1/4"	1-1/2"	10 GA.	LH	2.0		
1028	9-1/4"	1-7/8"	7 GA.	RH, LH	3.4		

#### CUPPED FLIGHTING:

531L	5-1/4"	1"	10 GA.	LH			
531R	5-1/4"	1"	7 GA.	RH			
831	7-1/4"	1-1/2"	7 GA.	RH			
1031	9-1/4"	1-7/8"	7 GA.	RH			

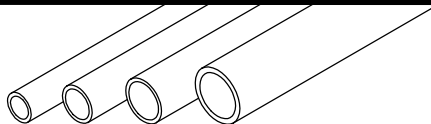
### AUGER TUBING



CAT. NO.	O.D.	WALL THICKNESS	WEIGHT PER FT.	PRICE PER 10'	PRICE PER 20'
430	4"	14 GA.	3.14		
430G ( GALVANIZED )	4"	14 GA.	3.14		
530	5"	14 GA.	3.95		
530G ( GALVANIZED )	5"	14 GA.	3.95		
630	6"	14 GA.	4.85		
630G ( GALVANIZED )	6"	14 GA.	4.85		
630H	6"	12 GA.	6.75		
730	7"	14 GA.	5.66		
830	8"	14 GA.	6.48		
830G ( GALVANIZED )	8"	14 GA.	6.48		
830H	8"	12 GA.	9.05		
1030	10"	14 GA.	8.17		
1030H	10"	12 GA.	11.33		

Seamless steel tube in stock lengths of 20'. To order with one attached flange (found on page 11) add "F" to catalog number. For flange on each end add "FF"

### CENTER TUBING



CAT. NO.	O.D.	I.D.	WEIGHT/FT.	PRICE PER 10'	PRICE PER 20'
534	1"	3/4"	1.13		
634	1-1/4"	1"	1.45		
834	1-1/2"	1-1/4"	1.77		
1034	1-3/4"	1-1/2"	2.09		
1034H	1-7/8"	1-1/2"	3.39		

High strength 50,000 psi yield steel tube in stock lengths of 20'