



Refer to parts breakdown drawing

- 1) Drain oil from gear case.
- 2) Loosen set screws (Ref. 39) in locking collar, then remove locking collar (Ref. 40) from drum shaft (Ref. 24)
- 3) Remove end housing (Ref. 36) from drum shaft (Ref. 24). If replacement of bushing is required, bronze bushing out of end housing and remove grease zerk.
- 4) Remove drum (Ref. 16), keys (Ref. 25) and spacer (Ref. 15) from drum shaft (Ref. 24).
- 5) Remove cover (Ref. 13) from gear case (Ref. 11).
- 6) Loosen nut on hydraulic hose fitting (Ref. 90).
- 7) Remove motor (Ref. 2) from fail-safe brake (Ref. 5).
- 8) Remove fail-safe brake (Ref. 5) from planetary gear box (Ref. 8)
- 9) Carefully remove planetary gear box (Ref. 8) from gear case (Ref. 11).
- 10) Remove retaining ring (Ref. 12) from drum shaft (Ref. 24).
- 11) Remove drum shaft (Ref. 24) from gear case (Ref. 11).
- 12) Remove ball bearings (Ref. 10) from gear case (Ref. 11).

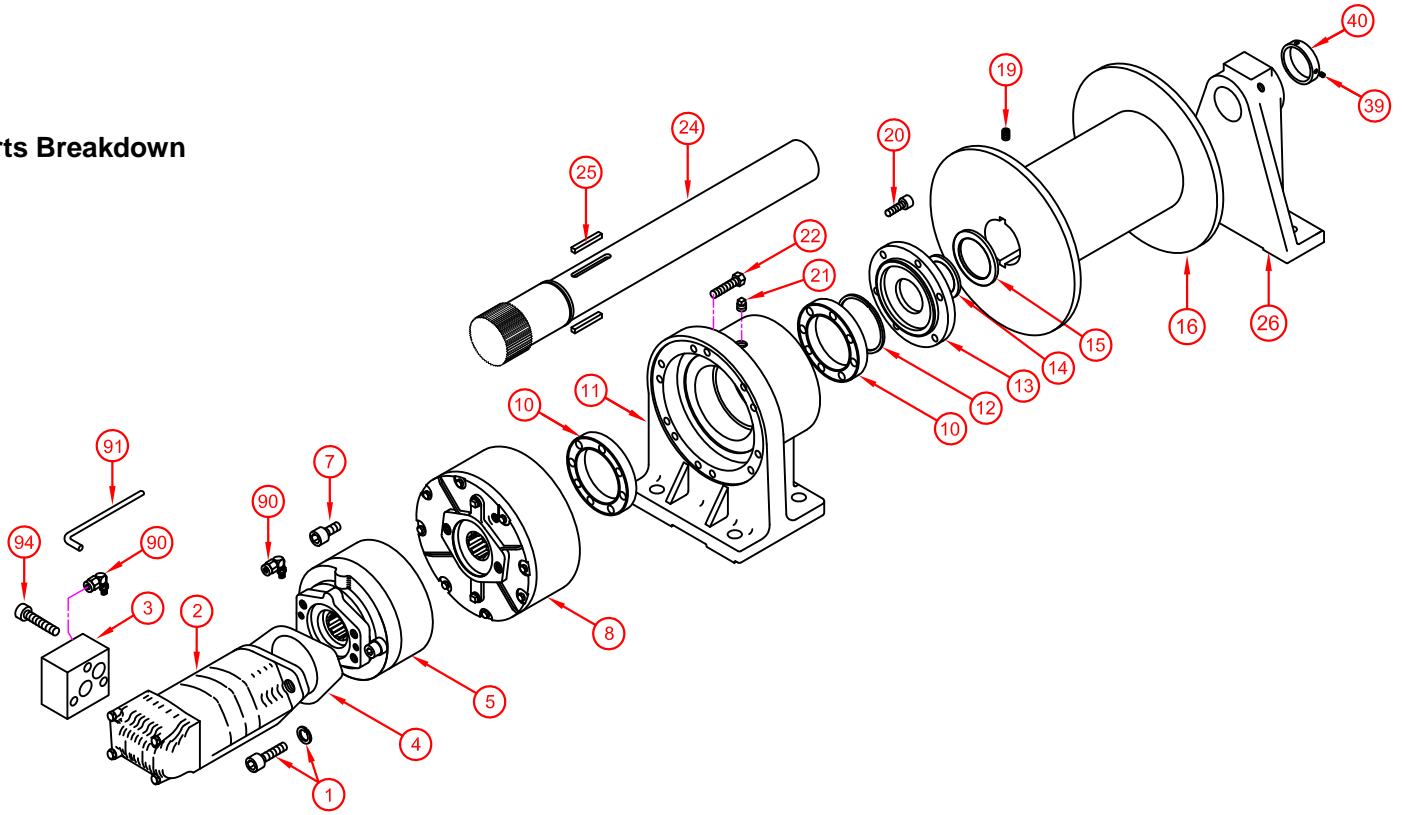
Assembly Instructions LS21K, LS22K & LS23K Series Planetary Winches

Refer to parts breakdown drawing

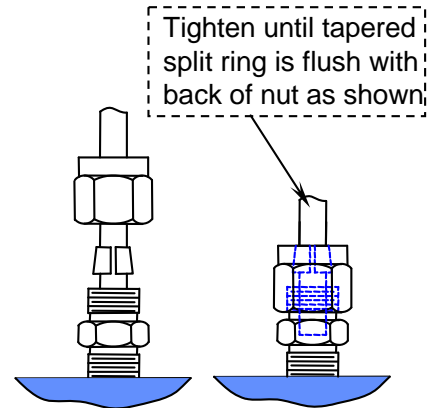
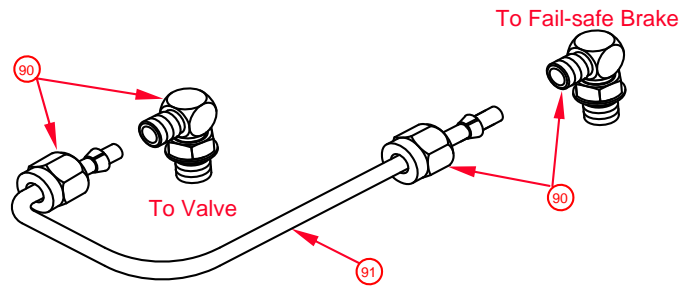
- 1) Clean gear case and all parts thoroughly, inspect all parts and replace if worn or scored.
- 2) Install ball bearings (Ref. 10) into gear case (Ref. 11).
- 3) Install drum shaft (Ref. 24) onto gear case and install retaining ring (Ref. 12) onto drum shaft (Ref. 24)
- 4) Use silicon (form a gasket) onto gear case (planetary gear box side) (Ref. 11).
Then carefully install planetary gear box (Ref. 8) onto gear case (Ref. 11) with (16) 3/8"-24NF x 2" Hex Head Cap Screws (Ref. 22). (being sure tighten the screws evenly)
- 5) If removed, install oil seal (Ref. 15) onto cover (Ref. 14).
- 6) Use silicon (form a gasket) onto gear case (Ref. 11) (gear case cover side).
Then install cover (Ref. 13) onto gear case (Ref. 11) with (6) 3/8"-16UNC x 1" Socket Head Cap Screws (Ref. 20).
(being sure tighten the screws evenly)
- 7) Install spacer (Ref. 15) onto drum shaft (Ref. 24).
- 8) Install keys (Ref. 25) in drum shaft (Ref. 24). Grease drum shaft (Ref. 24) with multi-purpose lithium grease or equivalent and install drum (Ref. 16).
- 9) If bronze bushing in end housing has been removed, press in new bushing. Hone inside diameter of bushing to 2.252 - 2.253". Place drill in grease zerk hole and drill a 1/4" hole through bushing. Install grease zerk.
- 10) Install end housing (Ref. 36) on drum shaft (Ref. 24). Leave about 1/16" clearance between drum and end housing. Place locking collar (Ref. 40) against end housing and tighten set screws (Ref. 39).
- 11) Use silicon (form a gasket) onto planetary gear box (Ref. 8) then install fail-safe brake (Ref. 5) onto planetary gear box with (2) 1/2"-13UNC x 3/4" Socket Head Cap Screws (Ref. 7).
- 12) Install motor (Ref.2) onto fail-safe brake (Ref. 5) with 1/2"-13UNC x 1-1/4" Gr. 5 SHCS & lock washers.
- 13) If removed, align both ends of hydraulic tube (Ref. 91) to the ports (Ref. 90). Push hydraulic tube (Ref. 91) into installed fitting body (Ref. 90) on motor (Ref. 2) and fail-safe brake (Ref. 8) until it stops. Fasten nuts and tapered split rings to fittings. Turn nuts hand tight, then with wrench tighten one turn or until rear of tapered split ring is flush with the nut. **Do Not Overtighten.**
- 14) Fill gear box with (4) pints (1.9 liters) Bloom ULLTRA-LUBE NO. 601 TRANS-WORM GEAR OIL.

Bloom Manufacturing Inc.

Parts Breakdown



**Hydraulic line assembly
(Ref. 2, 3, 5, 90 & 91)**



**Shown parts breakdown of
planetary gearbox (Ref. 8)**

