

# BLOOM™ WINCH



**Series 1000 and 1100V**

**HYDRAULIC CAPSTAN WINCHES**

*"Quality Since  
1910"*



***Bloom Winches,  
A Pull Above  
the Rest***

## **Bloom™ Hydraulic Capstan Winches – Standard Features**

- GEAR CASE** - Made of high strength cast iron. Completely sealed for oil enclosed operation and to keep dirt out.
- WORM SHAFT** - One piece alloy steel hardened and ground to insure long service.
- WORM GEAR** - High tensile aluminum-nickel alloy bronze. Use of optimum lead and pressure angles transmit maximum power to the drum efficiently.
- GEAR RATIO** - 20:1 and 10:1 ratios provide optimum efficiency in power and speed.
- BEARINGS** - Worm gear and worm shaft run on tapered roller bearings in an oil enclosed gear case.
- OUTPUT SHAFT** - 1.50" diameter heat -treated alloy steel minimum tensile strength 150,000 psi.
- CAPSTAN** - Cast aluminum - keyed to shaft.
- MOTOR MOUNT** - SAE(A) 2-bolt flange. 1" woodruff keyed motor shaft. Motor is directly coupled into worm shaft. No separate coupling required.



# BLOOM

**Manufacturing Inc.**

**Winch Division**

***Lifting  
Pulling  
Hoisting***

Toll Free Number: 1-800-394-1139

[www.bloommfg.com](http://www.bloommfg.com)

**"Custom Engineered Solutions"**

1443 220<sup>th</sup> Street,, Independence, Iowa 50644 • FAX: 319-827-1140 • PHONE: 319-827-1139

# BLOOM™ WINCH



## Series 1000 and 1100V

### HYDRAULIC CAPSTAN WINCHES

“Quality Since  
1910”

## Industry Applications

**Utility** - The Series 1000 and 1100V are specifically designed to handle the daily needs of the utility industry

**Fishing & Marine** – Both the Series 1000 and Series 1100V provide optimum performance in marine applications and environments. The Series 1000 is commonly used as pot and net haulers, and the Series 1100V for dock and barge applications



## Four Models Available

### **MODEL 10-A-SR-CAP-10-GALV**

10:1 RATIO. Pulls 1500 pounds at 110 feet per minute.

### **MODEL 11V-A-SR-CAP-10-GALV**

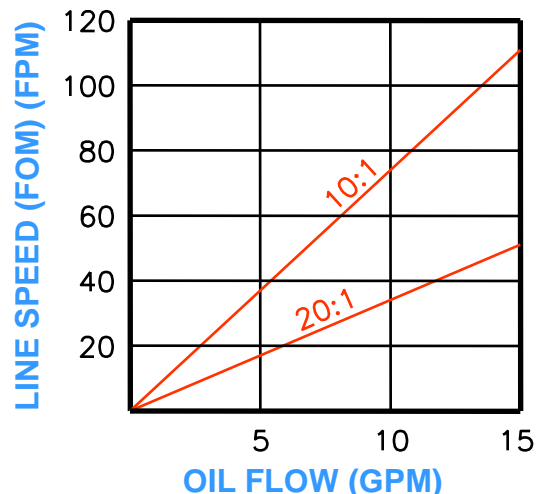
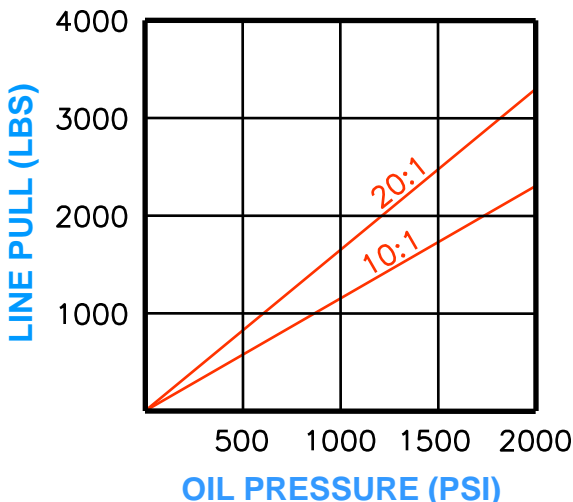
10:1 RATIO. Pulls 1500 pounds at 110 feet per minute.

### **MODEL 10-A-SR-CAP-20-GALV**

20:1 ratio. Pulls 3000 pounds at 55 feet per minute.

### **MODEL 11V-A-SR-CAP-20-GALV**

20:1 ratio. Pulls 3000 pounds at 55 feet per minute.



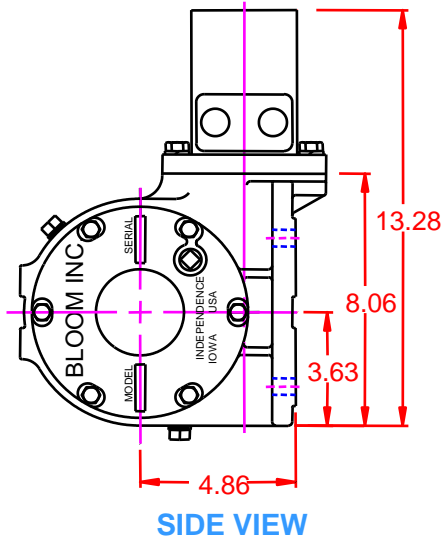


# BLOOM™ WINCH

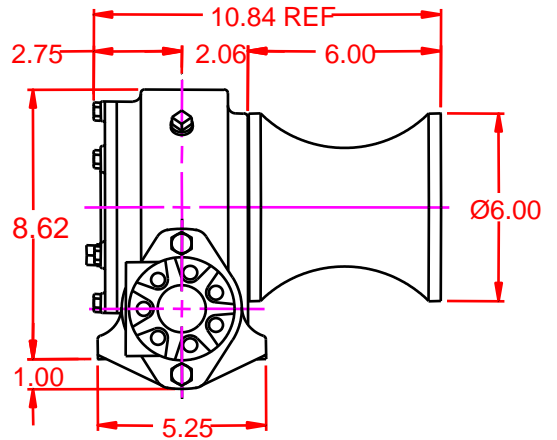
"Quality Since  
1910"

## Dimensional Drawings

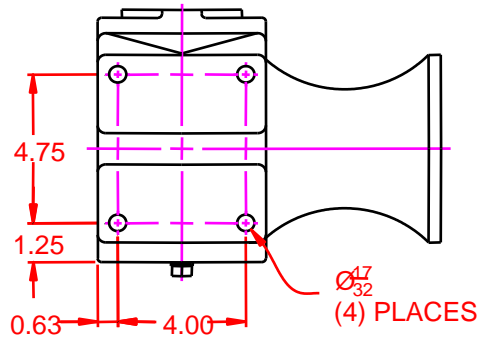
### Series 1000 Capstan



SIDE VIEW

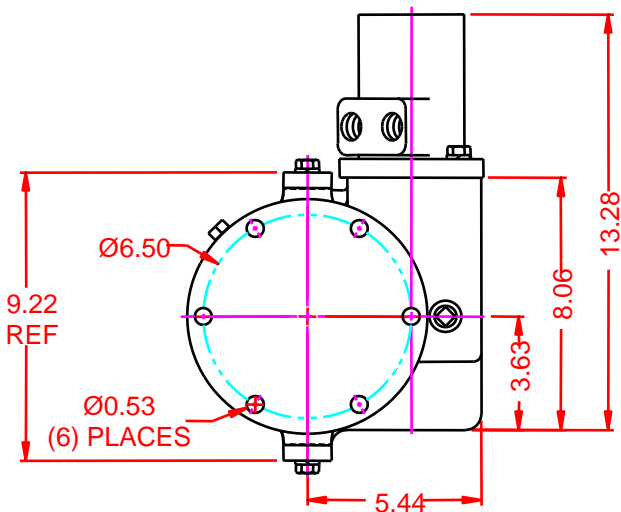


FRONT VIEW

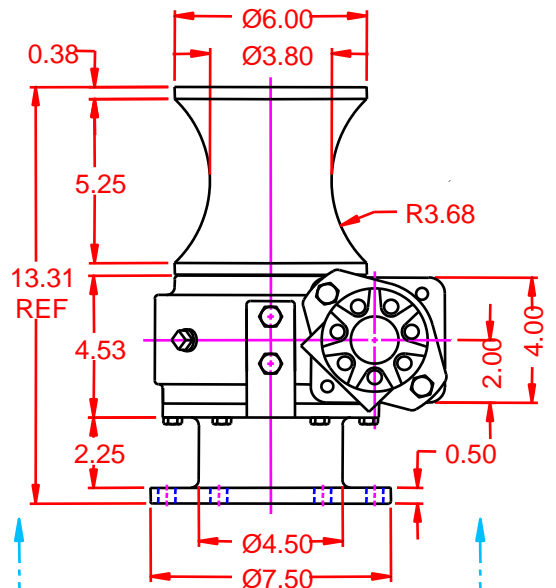


BOTTOM VIEW W/O MOTOR

### Series 1100V Capstan



BOTTOM VIEW



BOTTOM VIEW

# **BLOOM™ WINCH**

## Correct choice of Directional Control Valves for Bloom Winches

**Tandem Center Spool Valve** – Work Ports are **blocked** in neutral position

Use on all winches that use motor only to hold load.

\*Winches require ridged mounting plate.  
See owner's manual for information about proper mounting plate thickness or call Bloom Sales Engineer at factory

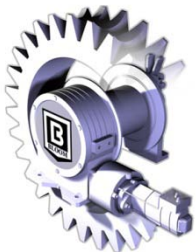
### **WARNING!**

Goods are not intended for use in the moving or lifting of persons!

The winches described herein are neither designed nor intended for use or application to equipment used in the lifting or moving of persons and it is understood that all such use shall be at the sole risk of the user.

The cable clamps on winches are not designed to hold rated loads. A minimum of 5 wraps of cable must be left on drum barrel to guarantee holding of rated load.

Applications of winch where life would be endangered by any event are not recommended.



## **BLOOM Manufacturing Inc.** **Winch Division**

1443 220<sup>th</sup> Street,, Independence, Iowa 50644

FAX 319-827-1140 PHONE 319-827-1139

[www.bloommfg.com](http://www.bloommfg.com)

© Copyright Bloom Mfg 2010