

BLOOM™ WINCH



Series 1200

HYDRAULIC CABLE WINCHES

The rugged construction and versatility of the **1200 Series** makes it adaptable to a wide range of applications. 1200 Series direct drive winches are used for industrial pulling and hoisting applications, fishing boats, marine craft, drill rigs, small cranes, factory material handling and rear load waste handlers. The **1200C Series** winches are equipped with a sliding clutch to allow free-spooling of the drum for pulling applications including factory material handling, mining and logging equipment, flat bed trailers, air freight pullers, off the road tractors and rear of cab and front mounting on ½ to 1 ½ ton trucks. Both the 1200 and 1200C Series are available with a oil cooled adjustable automatic safety brake in a variety of motor displacements.

1200C Series shown with clutch and oil cooled safety brake Low Profile or Base Mount Available

"Quality Since 1910"



**UP TO 12,000 LBS.
CAPACITY**

Bloom™ Hydraulic Cable Winches – Standard Features

- | | |
|----------------------|--|
| GEAR CASE | - Made of high strength cast iron. Completely sealed for oil enclosed operation and to keep dirt out. |
| WORM SHAFT | - One piece alloy steel hardened and ground for extra durability. |
| WORM GEAR | - High tensile aluminum-nickel alloy bronze. Optimum lead and pressure angles transmit maximum power to the drum. |
| GEAR RATIO | - 20:1 standard, 27:1 and 40:1 optional ratios provide optimum efficiency in power and speed. |
| BEARINGS | - Worm gear and worm shaft run on tapered roller bearings. Outer end housing has a sealed ball bearing. |
| DRUM SHAFT | - 1-1/2" diameter heat -treated alloy steel minimum tensile strength 150,000 psi. |
| CABLE DRUM | - Tough all steel construction resists breakage or warping. |
| CLUTCH OPTION | - 1200C Series winches comes equipped with heat-treated dog type clutch to provide free-spooling of the winch drum. Positive lock-in and lock-out. |
| BRAKE OPTION | - Oil cooled automatic safety brake disengages when a load is lifted and automatically engages when power is removed or the load is lowered. |



www.bloommfg.com

BLOOM
Manufacturing Inc.
Winch Division

*Lifting
Pulling
Hoisting*

Toll Free Number: 1-800-394-1139

"Custom Engineered Solutions"

1443 220th Street, Independence, Iowa 50644 • FAX: 319-827-1140 • PHONE: 319-827-1139

BLOOM™ WINCH

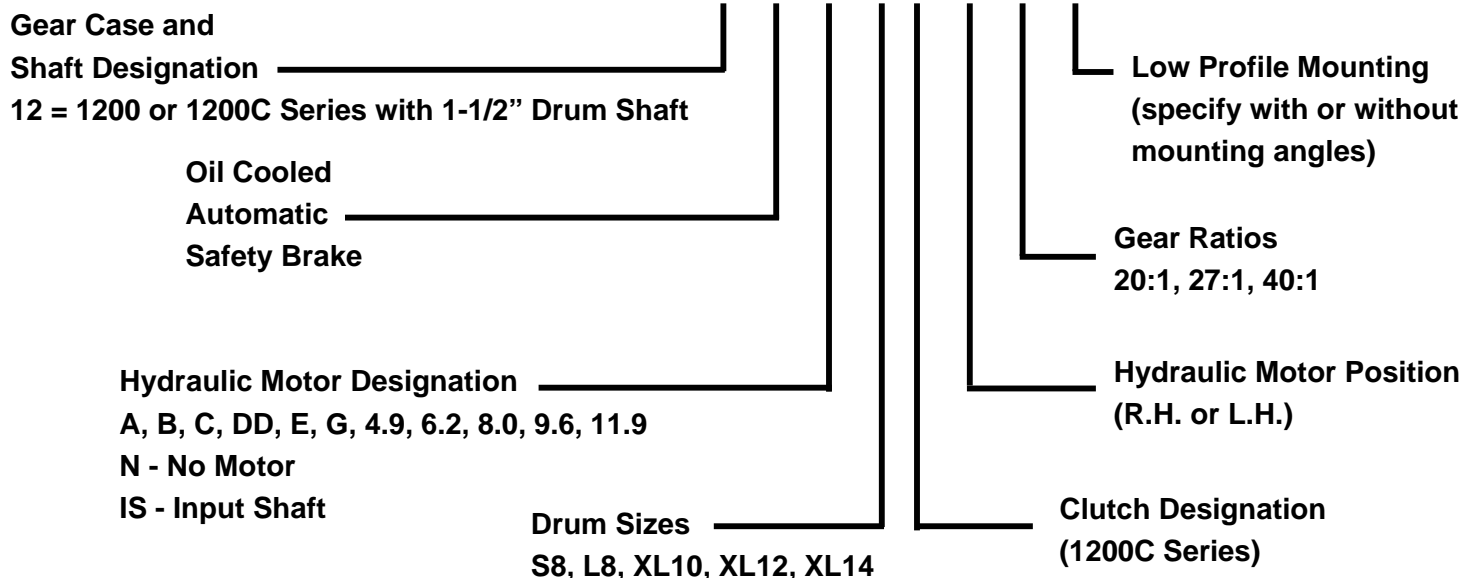


1200 and 1200C Series

Model Selection from Performance Data

"Quality Since 1910"

MODEL EXAMPLE: 12-B-4.9-L8-C-RH-20-LP



(12) Indicates 1200 or 1200C Series Winch.

(B) Designation for oil cooled automatic safety brake. Brake should be used in lifting or pulling applications where positive load holding is required. Omit "B" for winch without brake.

(4.9) Designates hydraulic motor. Motor size is determined from motor performance charts. All motors have 7/8"-14 SAE O-ring ports. To order winch less hydraulic motor use "N" designation. To order a mechanically driven winch with 1" input shaft use "IS" designation.

(L8) Select drum size from chart below:

DRUM CAPACITY

CABLE DIAMETER (IN.)	1/4	5/16	3/8	7/16	1/2
DRUM "S8" CAPACITY (FT.)	260	160	105	75	55
DRUM "L8" CAPACITY (FT.)	390	240	160	110	80
DRUM "XL10" CAPACITY (FT.)	840	550	340	250	170
DRUM "XL12" CAPACITY (FT.)	1320	840	580	380	280
DRUM "XL14" CAPACITY (FT.)	1900	1180	760	540	410

(C) Designates 1200C Series winch with dog clutch for free-spooling drum. 1200C Series winches are for pulling only. For lifting applications, the 1200 Series is used and the "C" is omitted.

(RH) Hydraulic motor may be placed on either side of gear case. Specify right hand (RH) or left hand (LH) as viewed looking at gear case cover. Right hand is standard.

(20) Indicates gear ratio. 20:1 is standard. 27:1, and 40:1 are also available.

(LP) Designates low profile mounting. It is necessary on all low profile winches to specify whether the winch is to be supplied "with angles" or "less angles".

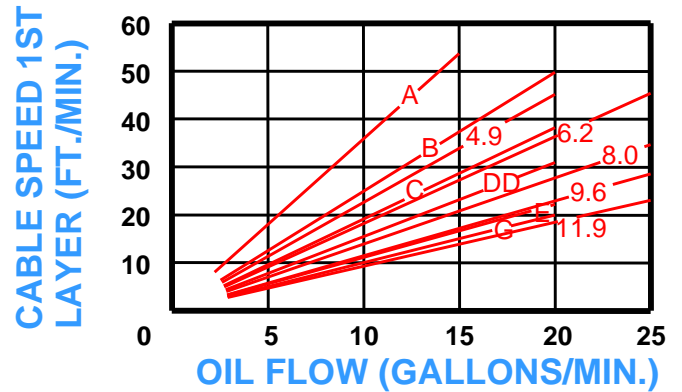
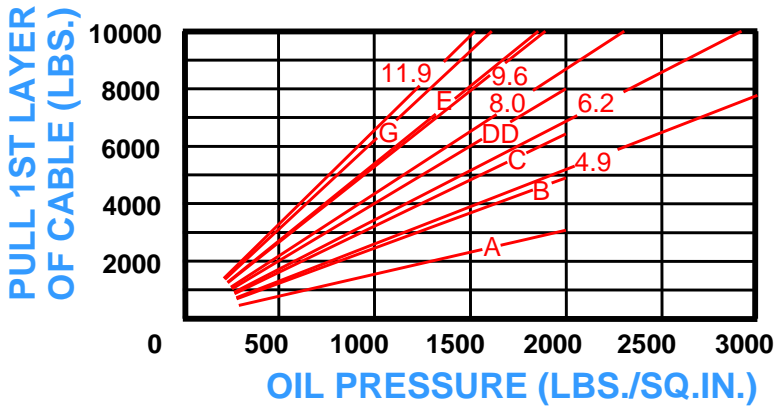


Series 1200 1200 & 1200C Series

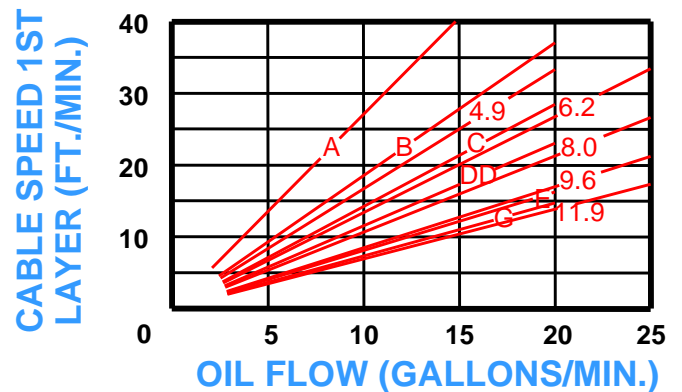
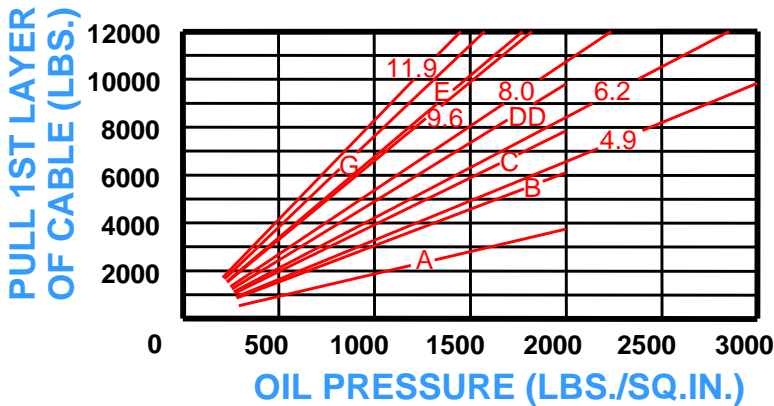
“Quality Since 1910”

Bloom Hydraulic Cable Winches With Oil Cooled Automatic Safety Brake Model Selection from Performance Data

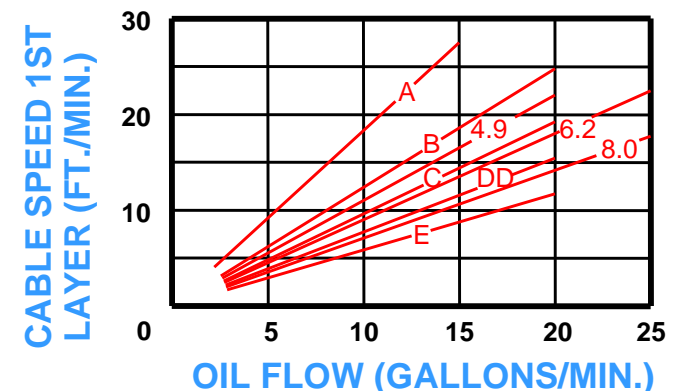
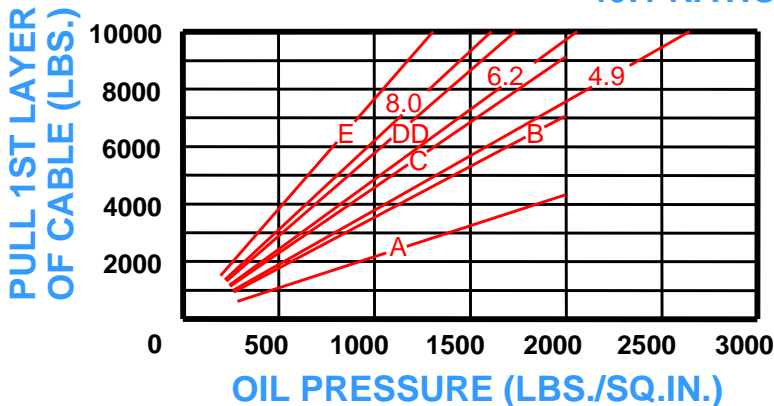
20:1 RATIO (standard)



27:1 RATIO (optional)



40:1 RATIO (optional)



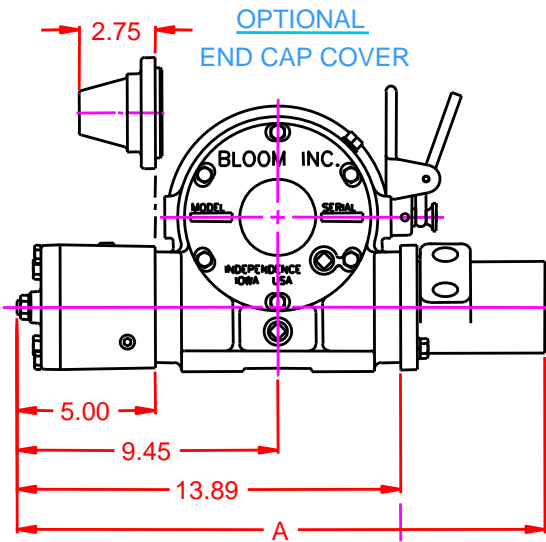


BLOOM™ WINCH

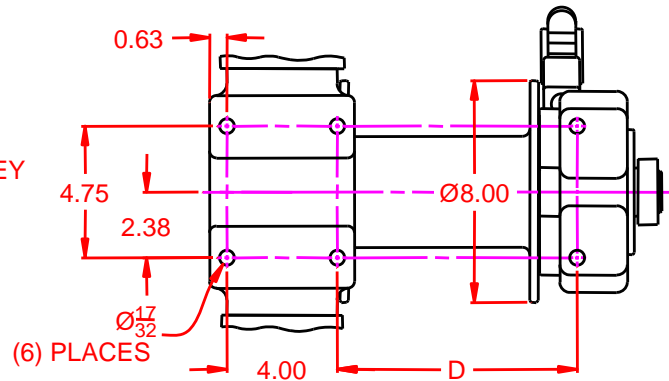
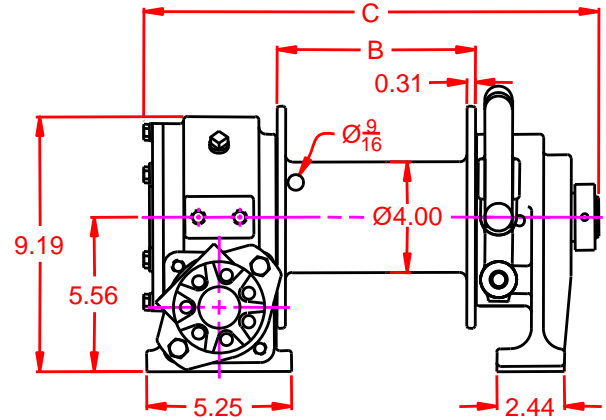
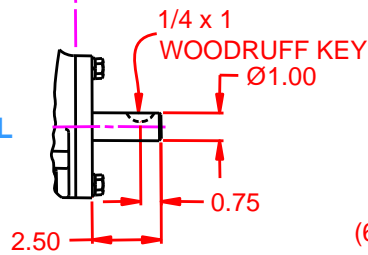
Dimensional Drawings

“Quality Since
1910”

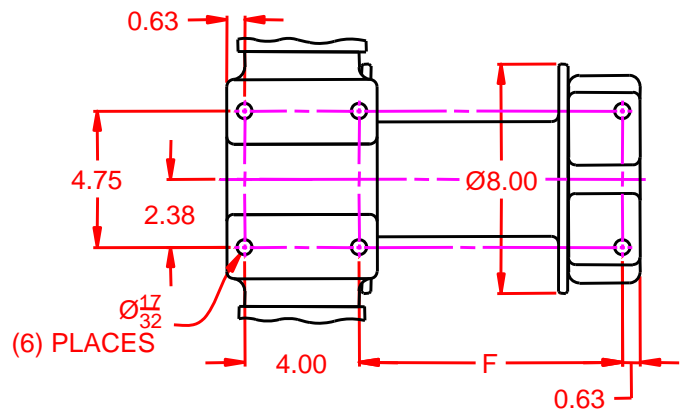
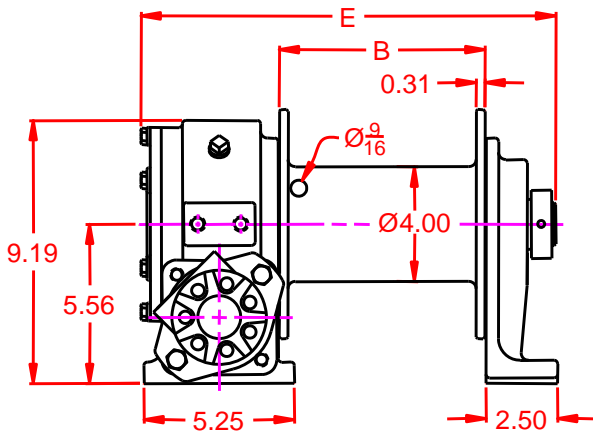
Base Mount Model - Clutch and Direct Drive
Series 1200 With S8 and L8 Drum



INPUT SHAFT MODEL



1200C SERIES BASE MOUNT, CLUTCH DRIVE



1200 SERIES BASE MOUNT, DIRECT DRIVE

MOTOR DESIGNATION	A	B	C	DD	E	G	4.9	6.2	8.0	9.6	11.9
(A) DIMENSION	19.11	19.26	19.38	19.51	19.73	19.86	21.15	21.33	21.58	21.58	21.85

DRUM DESIGNATION	WINCH DIMENSION				
	(B)	(C)	(D)	(E)	(F)
S8	7.19	16.48	8.68	14.48	9.18
L8	10.19	19.48	11.68	17.48	12.18

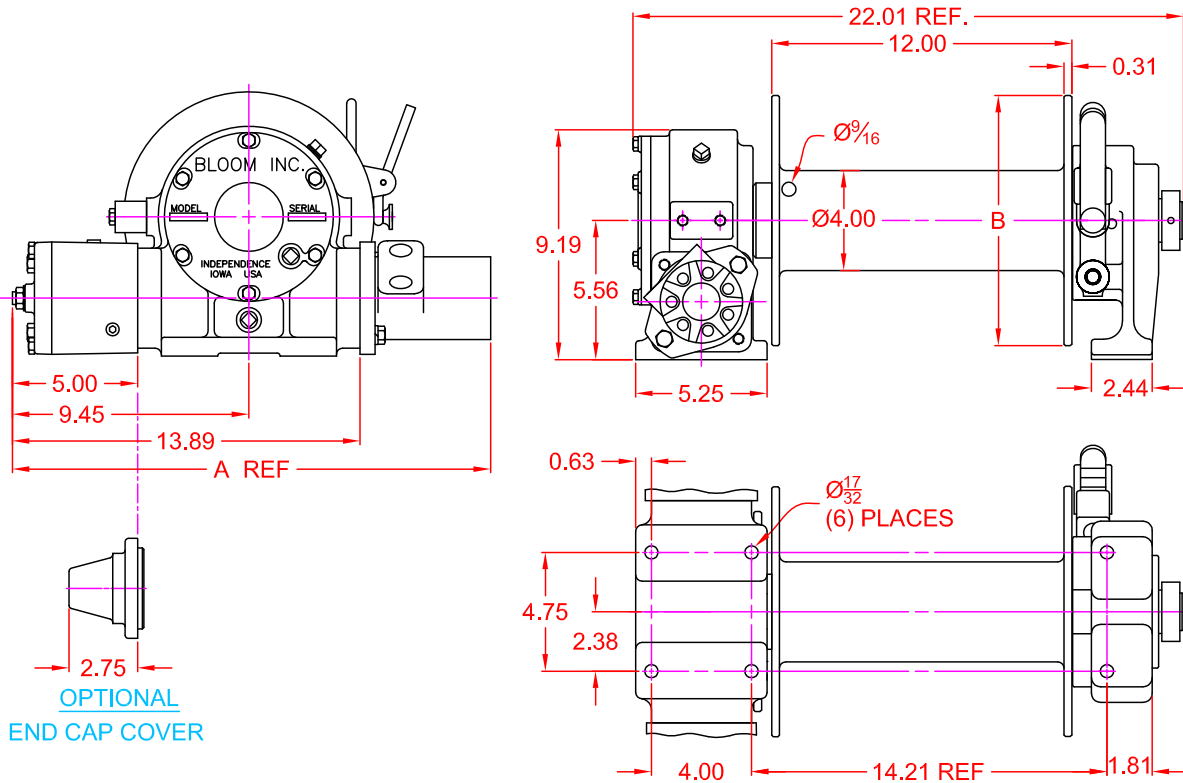


“Quality Since
1910”

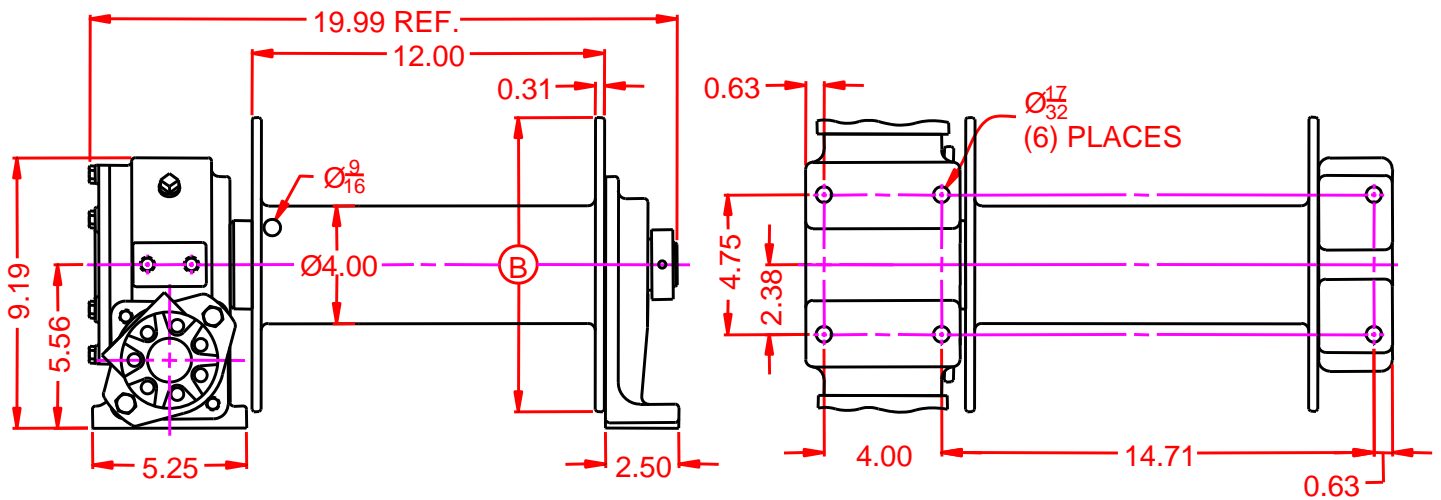
BLOOM™ WINCH

Dimensional Drawings

Base Mount Model – Clutch and Direct Drive
Series 1200 With XL10, XL12 and XL14 Drum



1200C SERIES BASE MOUNT, CLUTCH DRIVE



1200 SERIES BASE MOUNT, DIRECT DRIVE

MOTOR DESIGNATION	A	B	C	DD	E	G	4.9	6.2	8.0	9.6	11.9
(A) DIMENSION	19.11	19.26	19.38	19.51	19.73	19.86	21.15	21.33	21.58	21.58	21.85

MOTOR DESIGNATION	XL10	XL12	XL14
(B) DIMENSION	10	12	14

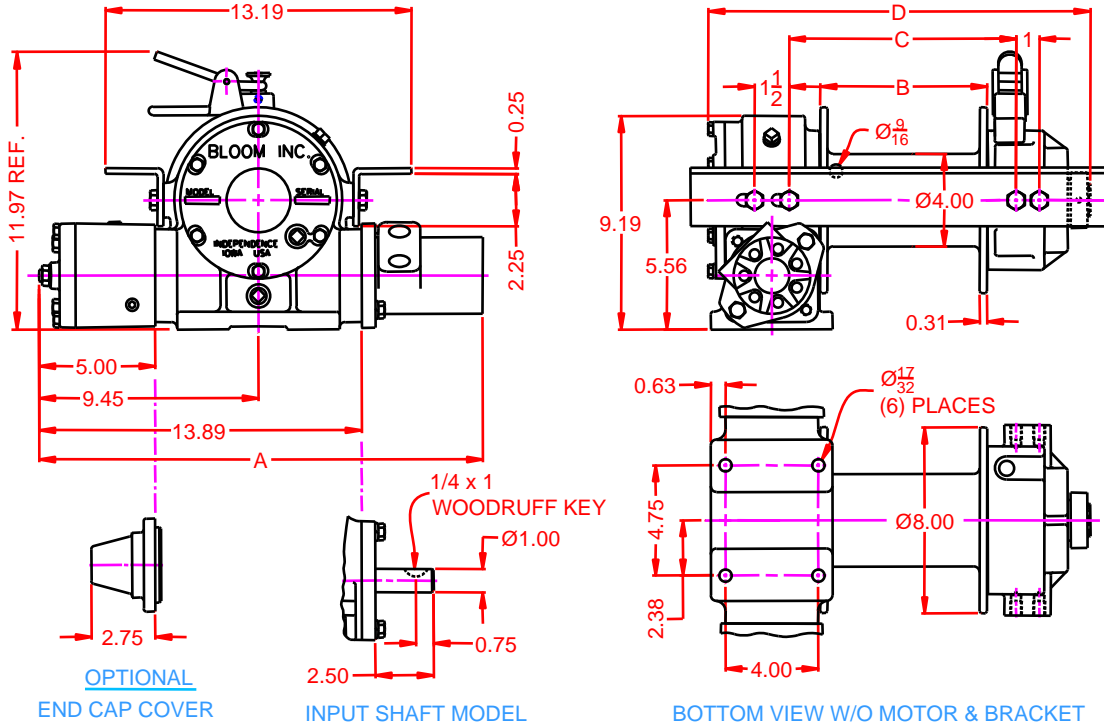


“Quality Since
1910”

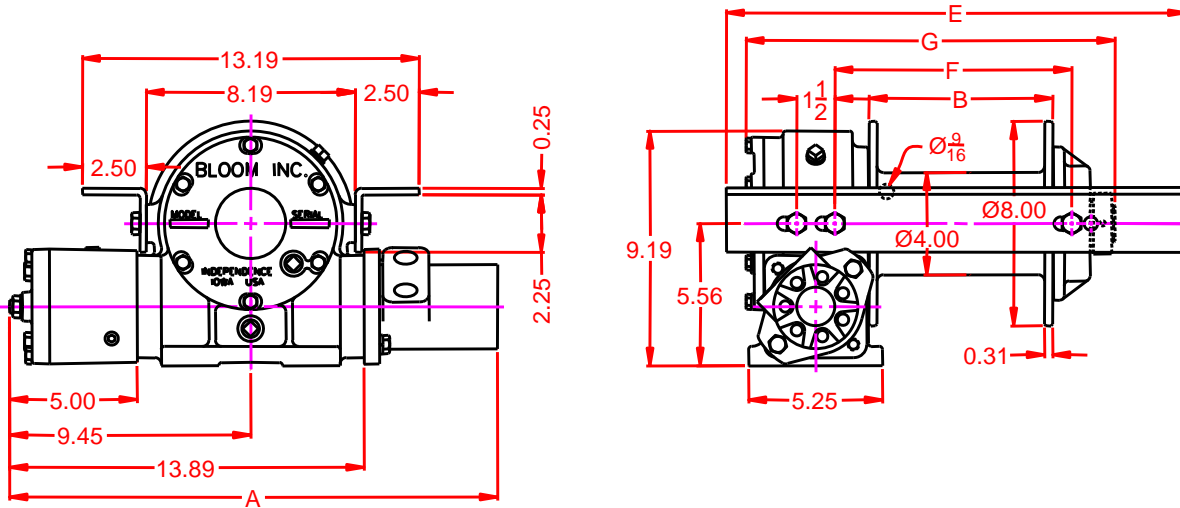
BLOOM™ WINCH

Dimensional Drawings

Low Profile Model - Clutch and Direct Drive
Series 1200 With S8 and L8 Drum



1200C SERIES LOW PROFILE MOUNT, CLUTCH DRIVE



1200 SERIES LOW PROFILE MOUNT, DIRECT DRIVE

MOTOR DESIGNATION	A	B	C	DD	E	G	4.9	6.2	8.0	9.6	11.9
Ⓐ DIMENSION	19.11	19.26	19.38	19.51	19.73	19.86	21.15	21.33	21.58	21.58	21.85

DRUM DESIGNATION	WINCH DIMENSION					
	Ⓑ	Ⓒ	Ⓓ	Ⓔ	Ⓕ	Ⓖ
S8	7.19	9.75	16.44	18.00	9.28	14.46
L8	10.19	12.75	19.44	21.00	12.28	17.46

BLOOM™ WINCH

Correct choice of Directional Control Valves for Bloom Winches

Tandem Center Spool Valve – Work Ports are **blocked** in neutral position

Use on all winches that use motor only to hold load.

*Winches require ridged mounting plate.
See owner's manual for information about proper mounting plate thickness or call Bloom Sales Engineer at factory

WARNING!

Goods are not intended for use in the moving or lifting of persons!

The winches described herein are neither designed nor intended for use or application to equipment used in the lifting or moving of persons and it is understood that all such use shall be at the sole risk of the user.

The cable clamps on winches are not designed to hold rated loads. A minimum of 5 wraps of cable must be left on drum barrel to guarantee holding of rated load.

Applications of winch where life would be endangered by any event are not recommended.



BLOOM Manufacturing Inc. **Winch Division**

1443 220th Street, Independence, Iowa 50644

FAX 319-827-1140 PHONE 319-827-1139

www.bloommfg.com

©Copyright 2010 Bloom Mfg. Inc.